



*Donor Guide*  
*2016-17*



# AGGIES UNLIMITED



Aggie Nation,

Thank you for your interest in supporting Aggie Athletics and the nearly 400 student-athletes that represent Utah State University at the highest level, on and off the field.

Private support is the foundation of our athletics program and the success of our teams is only possible with your involvement.

Please take some time to learn all about the ways you can become part of our team and contribute to the growth of Aggie Athletics. If you have any additional questions, our Aggies Unlimited staff will be ready to assist you.

We hope to see you in Logan soon. Go Aggies!



**JOHN HARTWELL**  
*VICE PRESIDENT AND DIRECTOR OF ATHLETICS*







# JALEN MOORE

BUSINESS



**MEN'S BASKETBALL | #14 WING**

"I have known that Utah State is a special place ever since I came to USU basketball games as a kid. I'm honored to compete for the Aggies and I am grateful for all of the support that comes from our students, fans and donors. Thank you for all that you do to make this experience possible for myself and all other student-athletes."

*Jalen Moore*





ALBANY  
14



# MADDIE DAY



FAMILY, CONSUMER AND HUMAN DEVELOPMENT



**VOLLEYBALL | #23 DEFENSIVE SPECIALIST**

We have the best fans and the best support system in the State. I feel like we are a part of a great big family and I couldn't be happier being a student-athlete at Utah State and to have the chance to represent the Aggies. Thank you for helping me receive my education from such an incredible institution while continuing to play the sport that I love.

*Maddie Day*







UTAH STATE™

STA

UTAH STA

20

UTAH STATE

45

UTAH STATE

38

UTAH STATE

5

UTAH STATE

41

UTAH STA

18

# THE PRICE OF SUCCESS

## COST OF THE STUDENT-ATHLETE EXPERIENCE



Out-of-State Scholarship:

- Tuition: \$18,448
- Fees: \$1,312
- Room & Board: \$6,596
- Books: \$800
- Living Expenses: \$3,720

## ADDITIONAL EXPENSES PER STUDENT-ATHLETE



TRAVEL

**\$6,700**



SPORTS  
MEDICINE

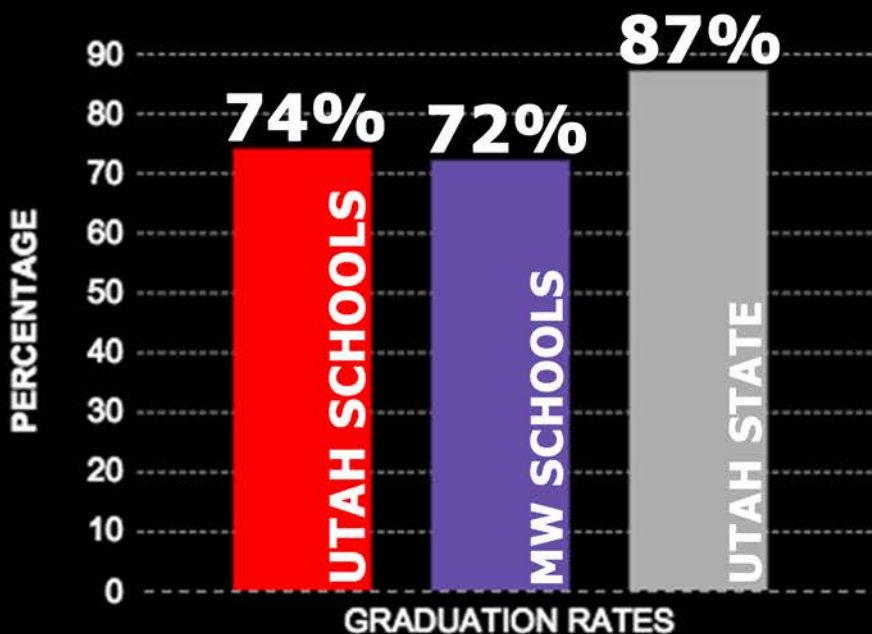
**\$1,180**



MEALS

**\$725**

## OUR STUDENT ATHLETES VS. THE COMPETITION



# AGGIES UNLIMITED

## OUR MISSION

The mission of Aggies Unlimited is to bring Aggies from across the nation together by encouraging private financial support of Utah State University Athletics.

## WHY WE NEED YOUR HELP

Aggies Unlimited is the official fundraising arm of Utah State University Athletics. Proud members of Aggies Unlimited are Aggie fans, alumni and friends who understand the cost to maintain a premier athletics program.

While the primary goal is to fully fund the education experience of nearly 400 Utah State University student-athletes, Aggies Unlimited is also focused on providing resources for facility upgrades, operational support of 16 varsity sport programs, and other special projects that enhance the student-athlete experience.

The growth of Aggies Unlimited will be the key driving force behind our ability to compete for conference championships and allow USU student-athletes to reach their fullest potential academically, athletically and socially.

## GIVING OPPORTUNITIES



BIG BLUE  
SCHOLARSHIP  
SUPPORT



SPORT  
INTEREST  
GROUPS



SCHOLARSHIP  
ENDOWMENT



CAPITAL  
PROJECTS



LEGACY  
SOCIETY



BIG BLUE  
SCHOLARSHIP  
FUND SEATING









# AGGIE PRIORITY POINTS SYSTEM

Aggie Unlimited Points is the new priority point system, which exists to reward those individuals who have made a commitment to Aggie Athletics. In order to accumulate priority points, one must be an active member of Aggies Unlimited, making an annual contribution of at least \$50.00.

Priority Points totals are calculated throughout the year to determine selection order for season ticket seat assignments, away-game allocation, parking, seat improvements, and other special events or activities.

## CONTRIBUTIONS

**Historical Giving to Athletics (1988-2013)\***-1 Point for every \$100 given to athletics from 1988-2013 (Includes Aggies Unlimited, capital campaigns, endowments, irrevocable planned gifts, special projects, and sport-specific funds). \*University giving records begin in 1988

### 2014-Current

**BBSF Seating**-1 Point for every \$100 given to BBSF for priority seating.

**Annual Giving**-2 Points for every \$100 give to the BBSF (not attached to tickets).

**Restricted Giving**-1 Point for every \$100 in restricted giving (includes capital campaigns, special projects, sport specific programs, endowments, and irrevocable planned gifts).

## TRADE/GIFTS IN KIND

**Trade/Gifts in Kind**-1 Point for every \$300 worth of goods or services donated to Aggie Athletics

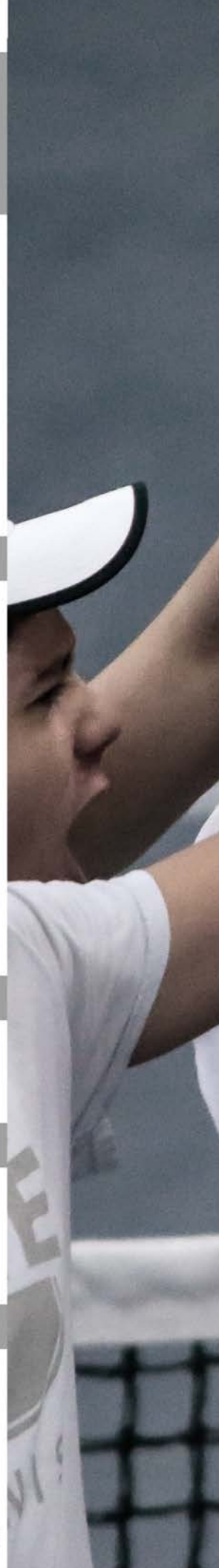
## SEASON TICKETS

**Season Ticket Holder(beginning with 2014)**-1 Point for every consecutive year as a season ticket member to Football. 1 Point for every consecutive year as a season ticket member to Men's Basketball

## FIXED(ONE TIME ALLOCATION)

**USU Letterwinner**-10 Points for lettering in a varsity sport (20 point max per account).

**USU Alumni**-2 Points for USU Alumni (4 point max per account).





Skullcandy



UNLEASH

TENNIS



# WAYS TO MAKE A GIFT

Listed below you will find various methods of becoming a member of Aggies Unlimited:

## ONLINE

Access your account online at [aggiesunlimited.net](http://aggiesunlimited.net).

## CHECK/CREDIT CARD

Make checks payable to Aggies Unlimited. Please include your membership number on the check when possible. All major credit cards are accepted.

## AUTOMATIC PAYMENT PLANS

Automatic monthly payment plans are an easy way to split your gift into smaller payments, while still maintaining your annual level of support. To set up a personal payment plan, please contact the Aggies Unlimited staff by calling 435.797.2583

## PAYROLL DEDUCTION (USU EMPLOYEES ONLY)

To make your contribution through a monthly deduction out of your payroll, please visit the Aggies Unlimited staff offices at the Dee Glen Smith Spectrum during regular business hours, Monday through Friday 8 a.m. to 5 p.m.

## GIFTS-IN-KIND

In some situations, gifts of goods/services will be accepted in lieu of a cash contribution. All gifts-in-kind must be approved by Aggies Unlimited.

## OTHER FORMS OF SUPPORT

Aggies Unlimited also accepts gifts in the form of stocks, real estate, life insurance, bequests, trusts, annuities, and securities





# FOOTBALL SCHOLARSHIP SEATING



SEASON TICKET PRICING			
PRIORITY SEATING AREA	TICKET PRICE	DONATION	TOTAL COST PER TICKET
CHAMPIONS CLUB PREMIUM SEATING <sup>^</sup>	\$325	\$1,000	\$1,325
West Level 1*	\$175	\$500	\$675
West Level 2*	\$175	\$400	\$575
West Level 3*	\$175	\$200	\$375
West Level 4*	\$175	\$100	\$275
East Reserved*	\$130	N/A	\$130
South Reserved*	\$95	N/A	\$95
General Admission*	\$95	N/A	\$95

	FAMILY PLAN (2 Adults & 3 Youths)**	Junior Aggies (Ages 3-14)
East Reserved	\$460	\$80
South Reserved	\$340	\$60
General Admission	\$340	\$60

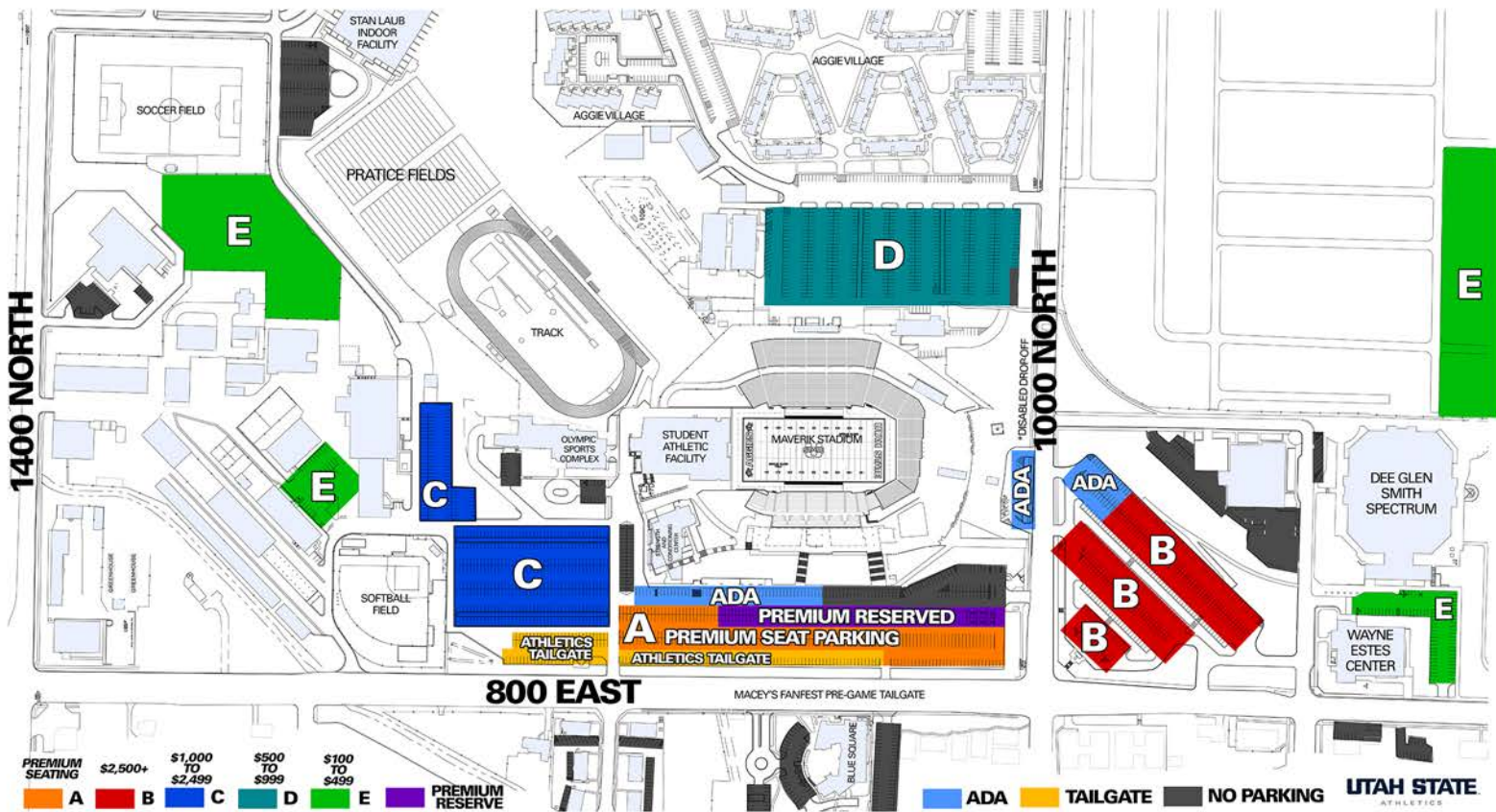
<sup>^</sup>For more information about new premium seating at Maverik Stadium (including Luxury Suites, Patio Suites and Club Seats), please call 435-797-2583

\*Faculty/Staff price is 20% discount off ticket price and 50% off donation requirement if applicable. Active, full-time faculty/staff and emeriti only. Maximum of four (4) tickets.

\*\*Youth are ages 3-14.

# FOOTBALL PARKING

## UTAH STATE FOOTBALL PARKING MAP 2016



# FOOTBALL PREMIUM SEATING

## THE PREMIUM EXPERIENCE

Over the past few years, Utah State Athletics has made tremendous strides in the facilities for our student-athletes. This has helped them train, study, practice and be more prepared for all aspects of their Utah State experience. The upgrades have also added a WOW factor when visiting campus and enhanced our coaches ability to recruit.

Now we turn our focus to you, the fan. We must show our commitment to providing the very best gameday experience possible. With that goal in mind, we are proud to present the Redevelopment of Maverik Stadium.

This project, while extensive, will elevate every fans' experience. Here are just a few ways that this project helps us.

- Premium seating that is the closest to the field in major college football
- Space for student-athlete training tables
- Revenue opportunities involving rental space of weddings, corporate rentals and other special events

## LUXURY SUITES



### Premium Access

- Single suites include 16 seats/4 SRO passes
- Closest suite to field distance in DI football
- Spectacular views of Cache Valley
- Elevator access to suite level
- Premium Parking

### Premium Service

- Catered food provided in suite
- Company recognition on suite entrance

### Premium Amenities

- Access to exclusive suite level restrooms
- Flat screen televisions in suite

### Cost

- Currently our luxury suites are sold out, but you may join our waitlist today by calling the Athletic Development office at 435.797.2246

## PATIO SUITES

### Premium Access

- Patio Suites open 2 hours prior to kick-off
- Elevator access to patio suite level
- Access to the Champions Club buffet

### Premium Amenities

- 20 total patio suites
- 4 seat semi private box
- Personal table television located inside patio suite
- Premium parking
- Outdoor covered suite area

### COST

- \$10,000 per year donation
- \$325 per ticket x 4
- Ticket price includes Champions Club buffet



# FOOTBALL PREMIUM SEATING



## CHAMPIONS CLUB SEATS

### Premium Access

- Champions Club open 2 hours prior to kick-off
- Elevator access to club level
- Access to the Champions Club buffet

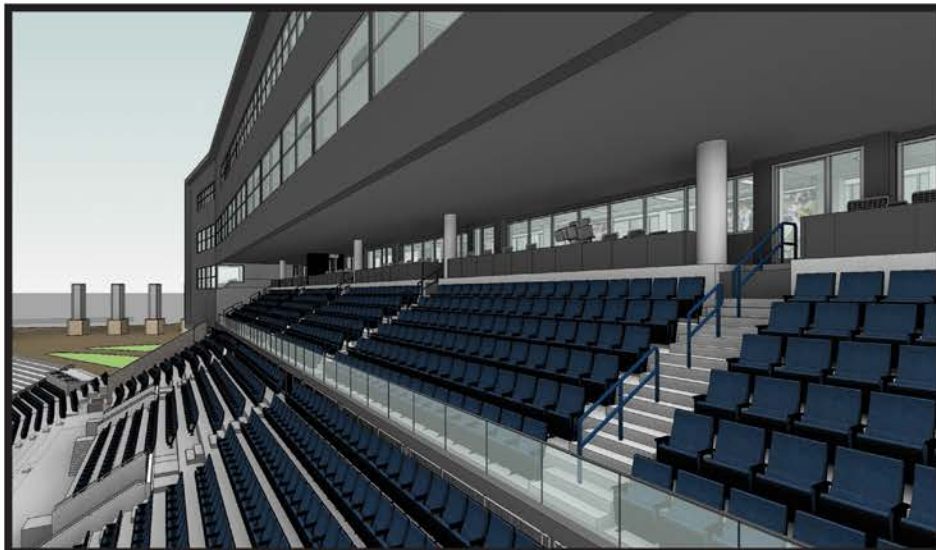
### Premium Amenities

- 700 Club Seats
- Padded luxury seat
- 1 Premium parking pass per every 4 seats
- Outdoor covered

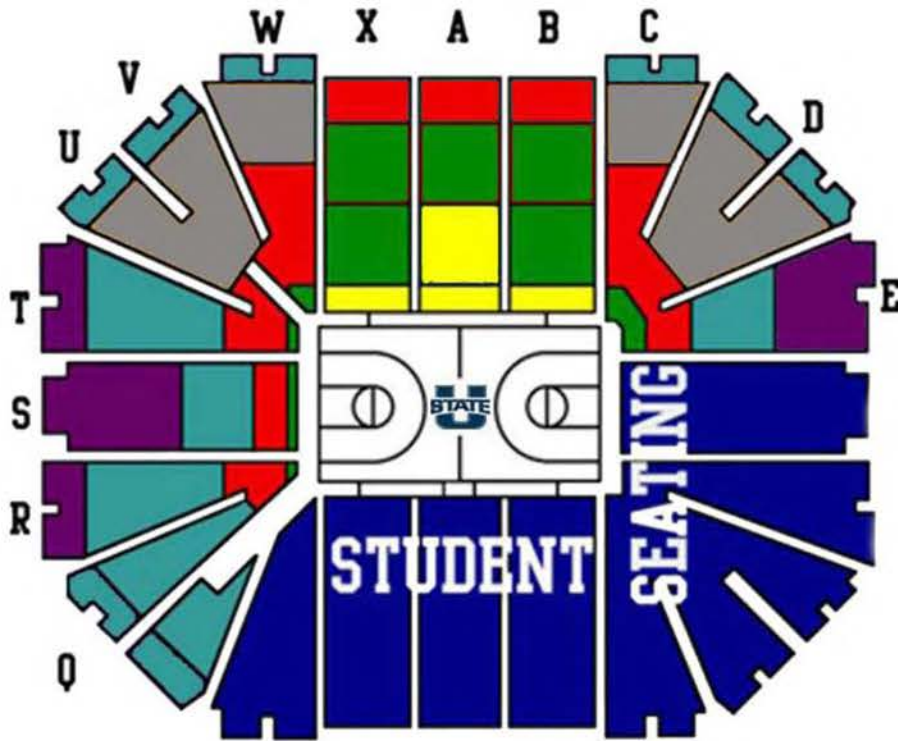
### seating area

### COST

- \$1,000 per year donation
  - \$325 per ticket
- Ticket price includes Champions Club buffet



# MEN'S BASKETBALL PRIORITY SEATING



## SEASON TICKET PRICING

PRIORITY SEATING AREA	TICKET PRICE	DONATION	TOTAL COST PER TICKET*
Priority Level 1	\$220	\$900	\$1,120
Priority Level 2	\$220	\$600	\$820
Priority Level 3	\$220	\$400	\$620
Priority Level 4	\$220	\$200	\$420
Priority Level 5	\$220	\$100	\$320
Non-Priority	\$230	N/A	\$230

## FAMILY PLAN (2 Adults & 3 Youths)\*\*

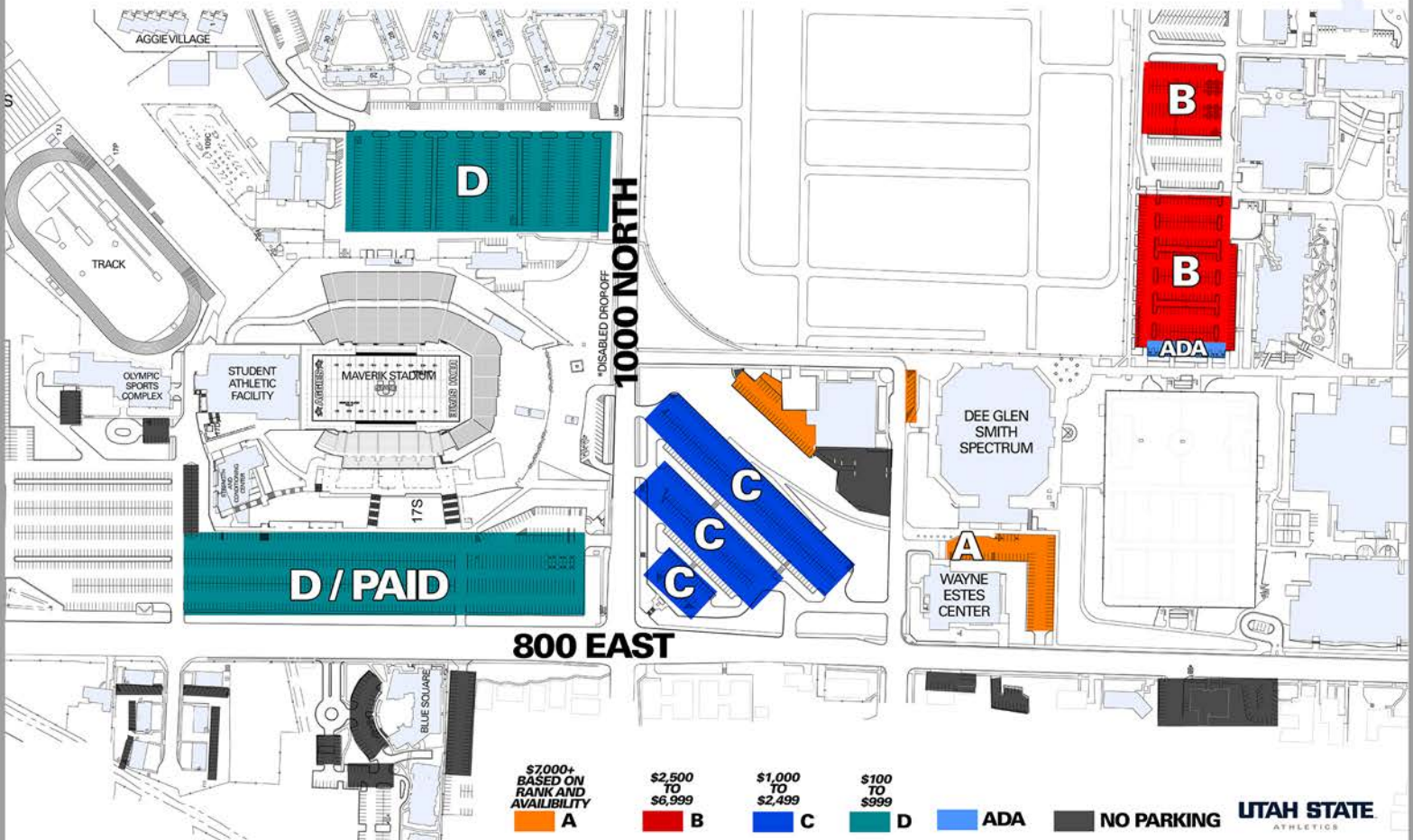
PRIORITY SEATING AREA	TICKET PRICE	DONATION	TOTAL COST PER TICKET*
Priority Level 5	\$800	\$500	\$1,300
Non-Priority	\$800	N/A	\$800

\*Faculty/Staff price is 20% discount off ticket price and 50% off donation requirement if applicable. Active, full-time faculty/staff and emeriti only. Maximum of four (4) tickets.

\*\*Youth are ages 3-14.

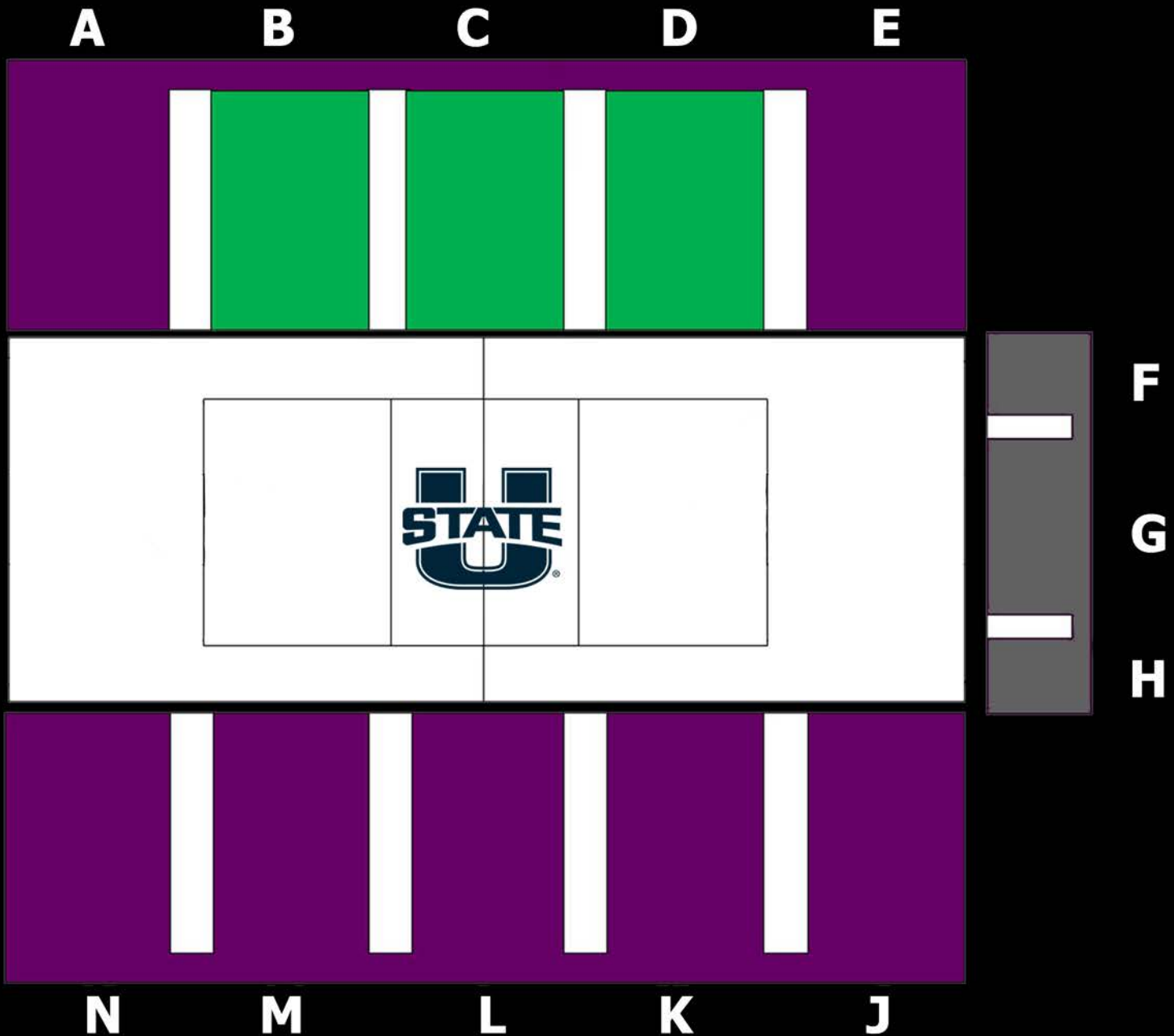
# MEN'S BASKETBALL PARKING

## UTAH STATE BASKETBALL PARKING MAP 2016-17





# WAYNE ESTES PRIORITY SEATING



## SEASON TICKET PRICING

PRIORITY SEATING	TICKET PRICE	DONATION	TOTAL COST PER TICKET
CHAIRBACKS	\$50	N/A	\$50
GENERAL ADMISSION	\$40	N/A	\$40

\*\*FACULTY/STAFF PRICE IS 20% DISCOUNT OFF TICKET PRICE AND 50% OFF BBSF DONATION REQUIREMENT IF APPLICABLE. ACTIVE, FULL-TIME FACULTY/STAFF, AND EMERITI ONLY. MAXIMUM OF 4 TICKETS.

# ADDITIONAL INFORMATION

## GROUP TICKET PACKAGES

Attending one of our events with a group of 20 or more? Take advantage of our group seating rates. For information on specific game tickets please call the Utah State Athletics Ticket Office at 1-888-USTATE1 or visit [utahstateaggies.com](http://utahstateaggies.com).

## MINI PLANS

Not sure if you have the time to commit to full-season tickets? Make sure to check out our mini-plan options for football and men's basketball by visiting [utahstateaggies.com](http://utahstateaggies.com)

## SINGLE GAME TICKETS

Single game tickets are available through the Utah State Athletics Ticket Office, over the phone by calling 1-888-USTATE1, or online at [utahstateaggies.com](http://utahstateaggies.com).

Save money on order fees by getting your tickets delivered right to your mobile device.

## AWAY GAME TICKETS

Help make every game a home game for the Aggies by purchasing away game tickets for football and men's basketball. Big Blue Scholarship Fund members please contact a BBSF representative by calling 435-797-2583. Non-BBSF members contact the Utah State Athletics Ticket Office at 1-888-USTATE1. Seat locations are allocated based on Aggie Priority Points.

## POSTSEASON TICKETS

The number of postseason tickets available is based on Utah State University allotments and is subject to availability. Tickets will be released to Big Blue Scholarship Fund members first, followed by season ticket members. Any remaining tickets will be made available to the general public. Seat locations are based on Aggie Priority Points.

## SEASON TICKETS

To retain season tickets locations, existing season ticket members must renew their tickets and Big Blue Scholarship Fund donation requirement prior to the published deadlines. Tickets that are not renewed by the deadlines will be made available to other season ticket members. Renewal deadline is May 6, 2016. Seat selection is May 20 and 21, 2016.

## WOMEN'S SPORTS PASS

General admission season tickets to all home women's basketball, volleyball, and gymnastics contests can be purchased for \$75 through the Utah State Athletics Ticket Office at any time throughout the year.

# FREQUENTLY ASKED QUESTIONS

**Q: Who can support Aggie Athletics through Aggies Unlimited?**

A: All fans of Aggie Athletics are encouraged to join Aggies Unlimited and support our student-athletes. Supporters are not required to buy season tickets or be alumni of Utah State University.

**Q: How much do I need to donate to become a member of Aggies Unlimited?**

A: Membership begins with an annual gift of \$50, however parking requires an annual gift of \$100.

**Q: How do I get a parking pass?**

A: Parking passes are only available for Football or Men's Basketball. To obtain a parking pass, one must be a season ticket member to that sport and also be an Aggies Unlimited member at the \$100 level or above.

**Q: What is my donation used for?**

A: All gifts to Aggies Unlimited are used to support the educational opportunities of Aggie student-athletes by funding tuition, room and board, books, and fees. Every dollar of private support that goes towards scholarships frees up another dollar that the athletics department can reallocate for facility projects, recruiting, travel, equipment and fan experience enhancements.

**Q: Why are there donation and season ticket renewal deadlines?**

A: The renewal deadlines are put in place so that vacated seats can be offered to current season ticket members who wish to improve their seat location or be purchased by new season ticket members.

**Q: How do I know my minimum AU priority seating requirement?**

A: Priority seat donations are based on a per-seat giving amount. In order to sit in a certain area, members must maintain a giving level equal to or above the total required donation per-seat.

**Q: I am an Aggie fan but can't make a financial commitment right now. Are there other ways that I can get involved?**

A: Of course! You could recruit others to join Aggies Unlimited by volunteering for the Spring Fund Drive, or volunteer to help out at an of the AU community events throughout the year. Contact us for more information at 435.797.2246.

# MAVERIK STADIUM PROHIBITED ITEMS

- UMBRELLAS
- STROLLERS
- ARTIFICIAL NOISE MAKERS
- PERSONAL PORTABLE HEATERS
- LARGE STADIUM OR FOLDING CHAIRS
- OUTSIDE FOOD OR DRINK OF ANY KIND
- SELFIE STICKS
- REMOTE AIRCRAFT/DRONES
- LASER POINTERS
- RECREATION EQUIPMENT (BIKES, SKATEBOARDS, BALLS)
- LARGE BAGS (ANY BAG THAT DOES NOT FIT UNDER A SEAT)
- FIREWORKS
- FAN PARAPHERNALIA THAT HINDERS THE VIEW OF OTHER SPECTATORS
- OTHER ITEMS DEEMED DANGEROUS OR INAPPROPRIATE BY VENUE STAFF
- ANIMALS OR COMFORT ANIMALS (CERTIFIED SERVICE ANIMALS ARE ALLOWED)



**UTAH STATE**  
**MAVERIK**  
STADIUM





# AGGIES UNLIMITED





**AGGIES UNLIMITED**

**UTAHSTATEAGGIES.COM**